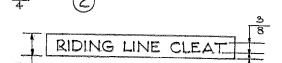
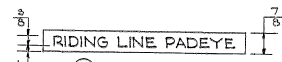


**KEY PLAN**  
AT SELECTED STATIONS  
1/4" = 1'-0"

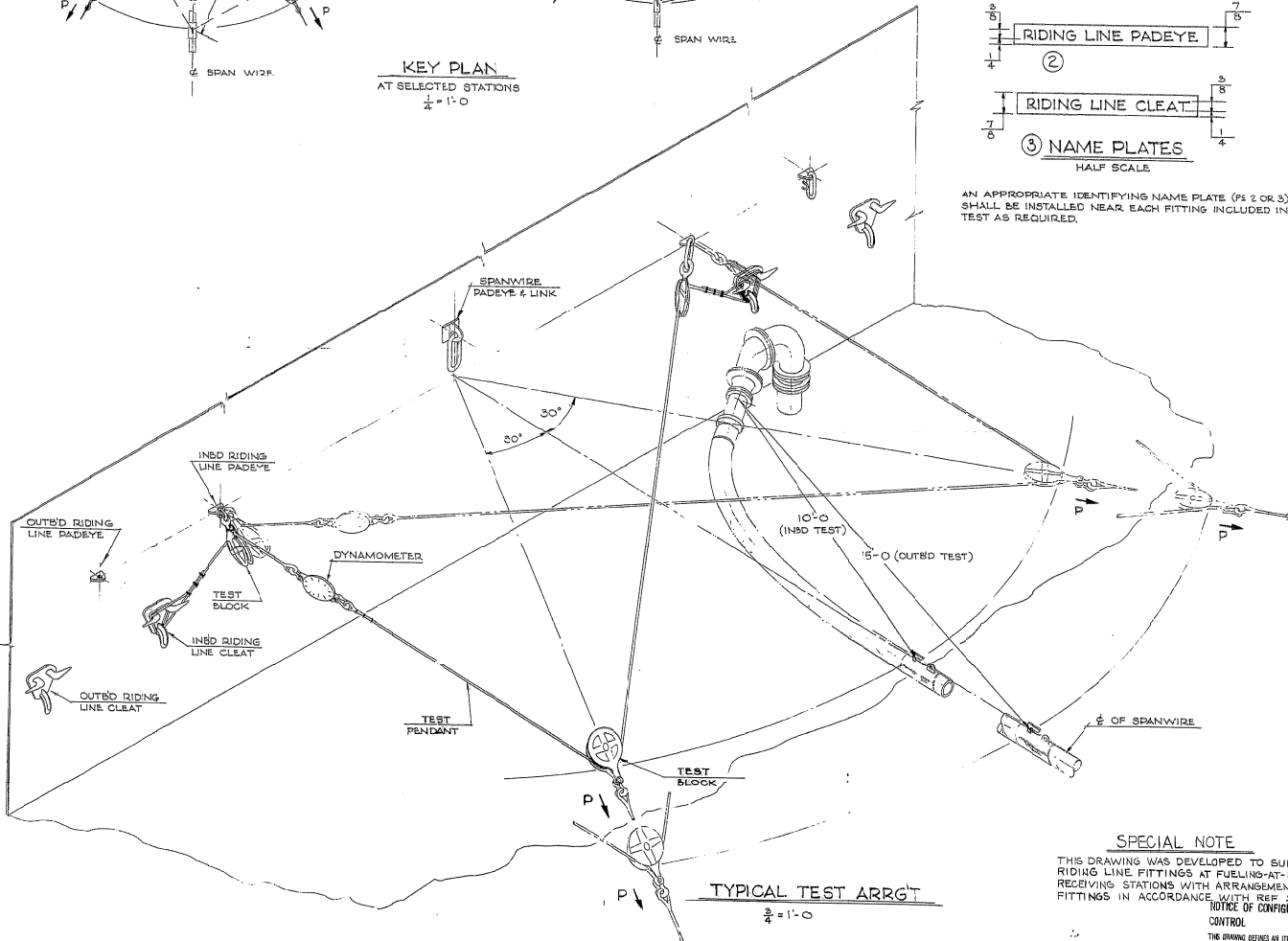
**FUELING AT SEA  
RIDING LINE FITTINGS**  
STATIC SYSTEM TEST - 15,000 LBS.  
PER NAVSHIPS HULL STD-805-2227933  
TESTED AT: \_\_\_\_\_ DATE: \_\_\_\_\_

**① TEST LABEL PLATE**  
HALF SCALE

ENGRAVE LETTERING IN TEST LABEL PLATE AS NOTED ABOVE. ENGRAVE THE LAST MONTH AND YEAR OF SHIP'S AVAILABILITY OPPOSITE DATE. AFTER SATISFACTORY COMPLETION OF THE TEST, INSTALL LABEL PLATE NEAR SPANWIRE PADEYE.



AN APPROPRIATE IDENTIFYING NAME PLATE (FIG 2 OR 3) SHALL BE INSTALLED NEAR EACH FITTING INCLUDED IN TEST AS REQUIRED.



**SPECIAL NOTE**

THIS DRAWING WAS DEVELOPED TO SUIT RIDING LINE FITTINGS AT FUELING-AT-SEA RECEIVING STATIONS WITH ARRANGEMENT AND FITTINGS IN ACCORDANCE WITH REF 1.

**NOTICE OF CONFIGURATION CONTROL**

THIS DRAWING REQUIRES AN ITEM OF REFERENCE AT SEA (RATS) STANDARD. THIS DRAWING IS NOT TO BE CHANGED UNLESS APPROVED BY THE COMMANDER NAVSTA. THE DRAWING PROJECT OFFICE IS NAVSTA, WASHINGTON, D.C.

**TEST PROCEDURE**

1. STATIC TEST OF INBD RIDING LINE FITTINGS:
  - (A) RIG A TEST BLOCK TO EACH OF THE RIDING LINE PADEYES LOCATED ON BHD OR SHIP'S STRUCTURE.
  - (B) RIG THE DYNAMOMETER TO THE TWO TEST PENDANTS AS SHOWN IN "TYPICAL TEST ARRGT."
  - (C) REEVE THE BITTER END OF SHORTER PENDANT THROUGH ONE OF THE BLOCKS AND STOP IT OFF ON THE ASSOCIATED CLEAT, BY LAYING TWO TURNS OF THE WIRE ROPE AND SECURING BY EYE SPLICING WITH THREE (3) CROSSY CLIPS.
  - (D) REEVE THE BITTER END OF LONGER PENDANT THROUGH OUTD'S TEST BLOCK, THEN THROUGH THE BLOCK RIGGED TO THE OTHER RIDING LINE PADEYE.
  - (E) ADJUST BLOCK TO A POSITION DIRECTLY OUTD'S OF THE SPANWIRE PADEYE AND LINK AND AT THE DISTANCE SHOWN PER THIS DRAWING.
  - (F) STOP OFF BITTER END OF LONGER PENDANT TO ITS ASSOCIATED CLEAT SIMILAR TO PARAGRAPH 1(C).
  - (G) ATTACH TEST LOAD PENDANT TO THE BLOCK RIGGED IN THE SIGHT OF THE TEST PENDANT, POSITION BLOCK 30° FWD OF ABEAM AND 9° TO 10° BELOW HORIZONTAL.
  - (H) STEADILY APPLY TENSION BY INCREASING LOAD "P" UNTIL THE DYNAMOMETER INDICATES 15,000 LBS TENSION IN THE PENDANTS. THIS STATIC LOAD SHALL BE ACTING OUTD'S & HORIZONTAL. HOLD LOAD FOR TEN (10) MINUTES.
  - (I) RELEASE TENSION IN TEST PENDANT AND POSITION OUTD'S BLOCK 30° AFT OF ABEAM. REPEAT TEST PER PARAGRAPH 1(H).
2. STATIC TEST OF OUTD'S RIDING LINE FITTINGS:
  - (A) USING SAME EQUIPMENT, RIG AND CONDUCT STATIC TEST OF OUTD'S RIDING LINE FITTINGS SIMILAR AS NOTED ABOVE FOR THE INBD FITTINGS.
3. WHERE RIDING LINE PADEYES ARE NOT INSTALLED, STOP OFF TEST PENDANTS DIRECTLY TO THE RIDING LINE CLEATS.

**TEST EQUIP REQ'D**

NOTE: SIZES AND/OR CAPACITIES NOTED ARE THE MINIMUM TO BE USED.

EQUIPMENT		NO.	REQ'D
1"	WIRE ROPE (8/12) TEST PENDANTS (1-10 SUIT)	2	
	CROSSY CLIPS FOR 1" WIRE ROPE	3	
	SHACKLES 1 1/2" DIA.	2	
	BLOCKS [EIGHT (8) TON CAPACITY] FOR 1" W.R	3	
	DYNAMOMETER - 15 TON CAPACITY.	1	

REV	NO	DESCRIPTION	DATE
3	1	NAME PLATE	C.R.E.S. Q2-5766 .05 THK
2	2	NAME PLATE	C.R.E.S. Q2-5766 .05 THK
1	1	TEST LABEL PLATE	C.R.E.S. Q2-5766 .05 THK

**LIST OF MATERIALS FOR ONE STA.**

REFERENCE DRAWING	
1.	STD F.A.S. REC'VG STATION-ARRGT 4 DEITS 805-2227933
2.	
3.	
4.	

**SUPERSEDES DRAWING NO.**

HUNTERS POINT NAVAL SHIPYARD SAN FRANCISCO, CALIF. ORDER NO. <i>100-11220</i> BRANCH SUPV. <i>W. J. ...</i> RECD. EXH. <i>...</i> CHECKED <i>...</i> DRAWN <i>...</i>	DEPARTMENT OF THE NAVY NAVAL SHIP ENGINEERING CENTER HULL STANDARD WASHINGTON, D.C. <b>TEST ARRGT</b> <b>RIDING LINE FITTINGS</b> <b>NON-PROBE F.A.S.</b> SIZE CODE IDENT. NAVSHIPS DRAWING NUMBER REV. <b>F 81898 805-2556869 -</b> FOR COMMANDER NAVSTA DATE: _____ SCALE: AS SHOWN INT. SHEET 1 OF 1
--	---