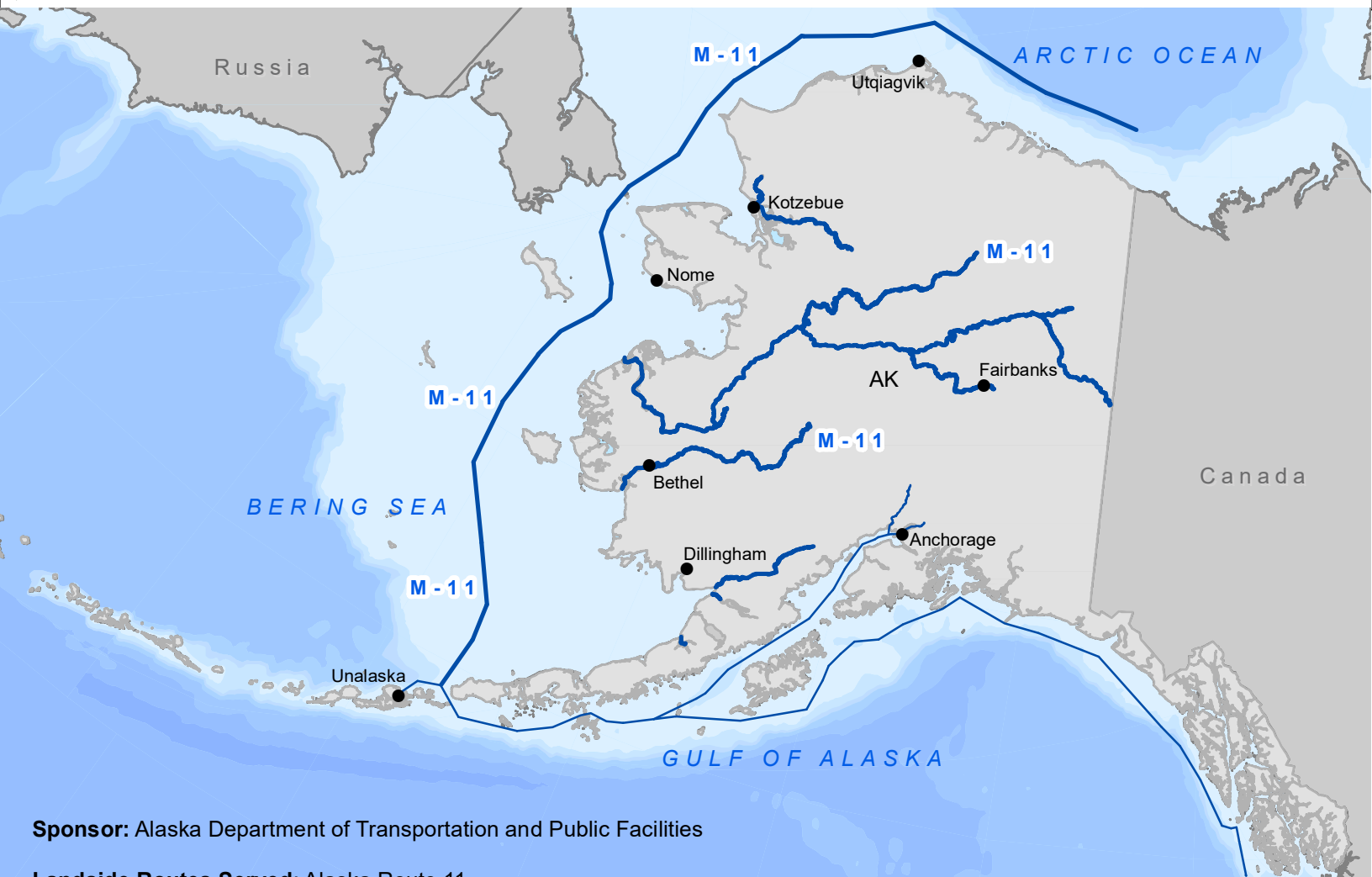


# Marine Highway M-11



**Sponsor:** Alaska Department of Transportation and Public Facilities

**Landside Routes Served:** Alaska Route 11

**Route Description:**

The M-11 Route, also known as the Arctic Gateway Marine route, aims to incorporate all navigable waterways and ocean channels for the transportation of goods, commodities, and services to, from, and across Southwestern and Northern Alaska. The route initiates at Unimak Pass in the Lake and Peninsula Borough, Aleutian Chain, and extends over 1,500 linear miles north along the coastline, ultimately concluding near the Canadian border at Kaktovik, AK. This non-conventional M-11 Route completes a network of marine routes that encompass Alaska's commercially navigable coastal and intercoastal waterways, spanning 6,640 miles from British Columbia to the Gulf of Alaska, and northward to the Beaufort and Chukchi Seas merging into the Arctic Ocean. The M-11 Arctic Gateway Marine Route will primarily serve Alaska's Western and Northern Coastlines and will connect with the M-5AK Marine Highway Route at Unimak Pass. The Southwest/Far North Alaska will include the hub ports of Nome, Dillingham, Bristol Bay (including King Salmon and Naknek), Bethl, Kotzebue, Utqiagvik (Barrow), and Kaktovik.

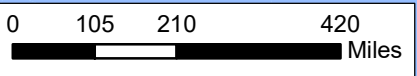
**Attributes:**

The M-11 Route designation will enhance transportation in coastal communities by leveraging designated routes and waterways under the United States Marine Highway Program. The designation is expected to benefit a cross-section of Alaskans by providing a greater range of waterborne transportation choices and alternatives.

Alaska is separated from the forty-eight contiguous states and is one of two "stand alone" states not bordered by another. Water transportation is the primary mode of transport for Southwestern and Northern Alaska as freight, including non-perishables, equipment, vehicles, lumber, and other supplies effectively move to these remote communities during the open water season. In addition, the area contains some of the most valuable and productive fisheries in the world as well as significant mineral resources.

**Legend**

- M-11
- Other Marine Highway Routes



Projection:  
NAD 1983 State Plane Alaska

Data Sources:

1. International Boundaries: IPUMS (<https://international.ipums.org/international/gis.shtml>)
2. Bathymetry data: Michael Baker International
3. Marine Highways: MARAD/DOT