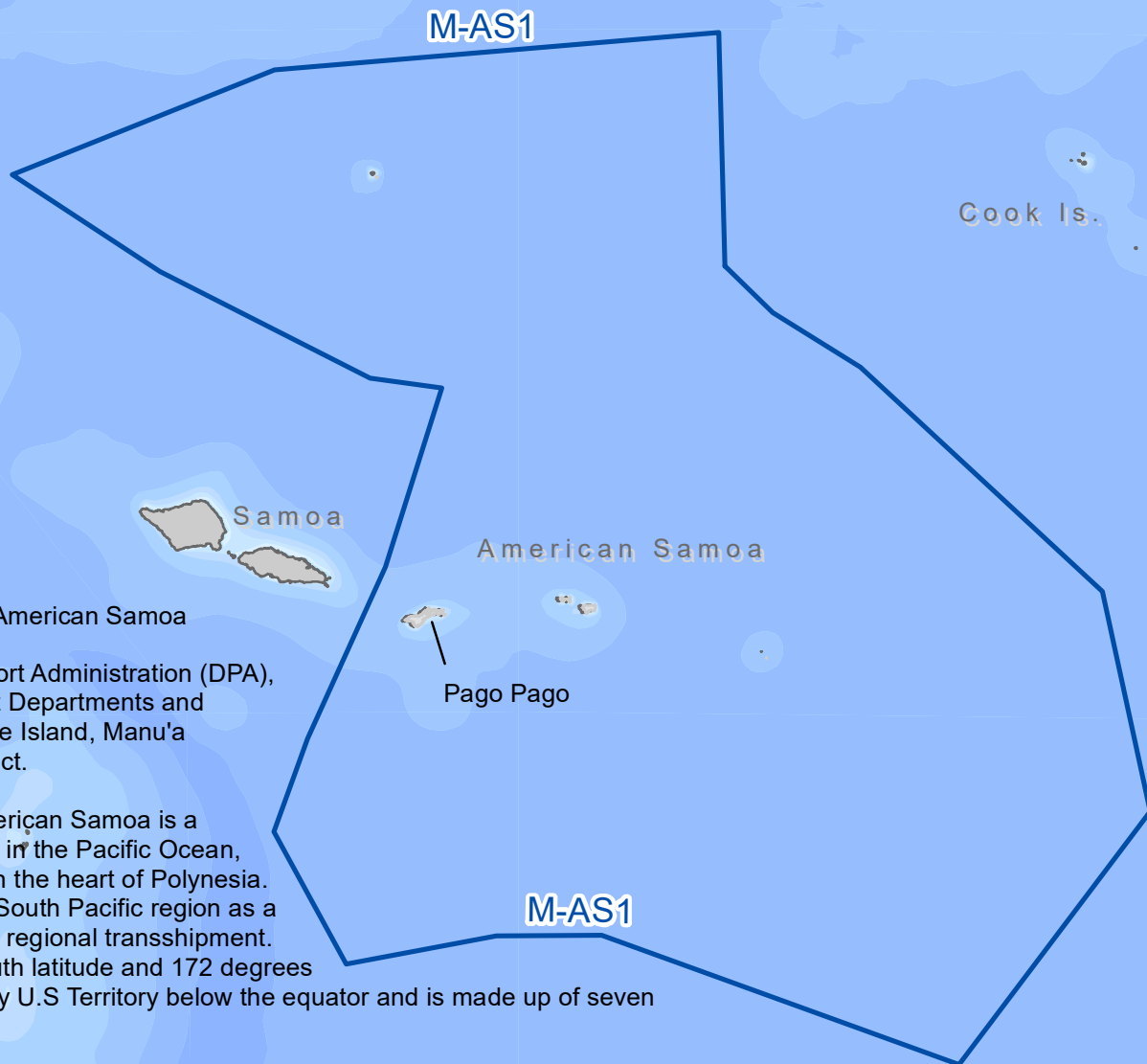


# Marine Highway M-AS1



**Sponsor:** Port of Pago Pago American Samoa

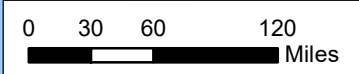
**Supporters:** Department of Port Administration (DPA), American Samoa Government Departments and Agencies, Swain's Island, Rose Island, Manu'a Districts and the Eastern District.

**Landside Route Served:** American Samoa is a United States Territory located in the Pacific Ocean, south of the equator and sits in the heart of Polynesia. Its harbor operations is in the South Pacific region as a hub for International trade and regional transshipment. Situated at 14 degrees 20' south latitude and 172 degrees 42' west longitude, it is the only U.S Territory below the equator and is made up of seven islands

**Route Description:** This Marine Highway Route includes the waterways and ocean channels between islands of the territory of American Samoa, within the Exclusive Economic Zone (EEZ). These Islands include" Tutuila, Aunuu, Ofu, Olosega, Ta'u, Swains and Rose Atoll

**Attributes:** The marine highway system is basically the only viable transportation system to serve the residents on these islands. Air Service is very limited due to the relatively small runways. There is limited air service by small feeder aircraft consisting of 16 seaters, with small luggage only. There is no air service to Aunuu, Swains and Rose Islands. Safe take off and landing weights for aircraft limit cargo to minimal luggage and cargo –the bulk of the commodities are shipped via the bi-weekly ferry service. Pago Pago Harbor, with the most natural deep water anchorages in the world, Tutuila is the largest and most populated of the seven islands and is a strategic midpoint for several critical shipping routes between the U.S West Coast, New Zealand, and Australia. American Samoa is 5,000 miles southwest of California; 2,500 miles southwest of Hawaii, and 1,600 miles northeast of New Zealand.

**Marine Highways**  
— M-AS1



Projection:  
NAD 1962 State Plane American Samoa

Data Sources:  
1. International Boundaries: IPUMS  
(<https://international.ipums.org/international/gis.shtml>)  
2. Bathymetry data: Michael Baker International  
3. Marine Highways: MARAD/DOT