



U.S. Department  
of Transportation  
Maritime  
Administration

**MANUAL OF ORDERS**

**MARITIME ADMINISTRATIVE ORDER**

REVOKES  
MAO 160-1,  
dated 10/24/79

NO. 160-1

EFFECTIVE DATE  
April 3, 1992

**SUBJECT**

**REDELEGATION OF AUTHORITIES BY THE GREAT LAKES REGION  
DIRECTOR**

**Section 1. General:**

1.01 Maritime Administrative Orders 100-1 and 100-2, and other directives on specific matters in the Manual of Orders establish the functions and authorities of the Region Director and give the Region Director authority to redelegate such authorities and to prescribe necessary limitations, restrictions, and conditions on the exercise of such authorities.

1.02 The authorities set forth in section 3 of this order, which can be redelegated, are hereby redelegated to designated officials. These officials may, in turn, redelegate their authorities.

**Section 2. Organization:**

The exhibit to this order describes the organization structure of the Great Lakes Region.

**Section 3. Redelegation of Authorities:**

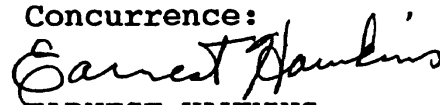
3.01 The Immediate Office of the Great Lakes Region Director includes the personnel authorized to exercise all the authorities of the Region Director with respect to the administrative support functions assigned by the Manual of Orders.

3.02 Region Maritime Development Offices. The Region Maritime Development Representatives are authorized to exercise all of the authorities of the Region Director with respect to the market promotion, national cargo and compliance, inland waterways and Great Lakes shipping, and port and intermodal development functions assigned by the Manual of Orders. The Cleveland Office is also authorized to exercise all of the authorities of the Region Director with respect to firefighting school functions assigned by the Manual of Orders.



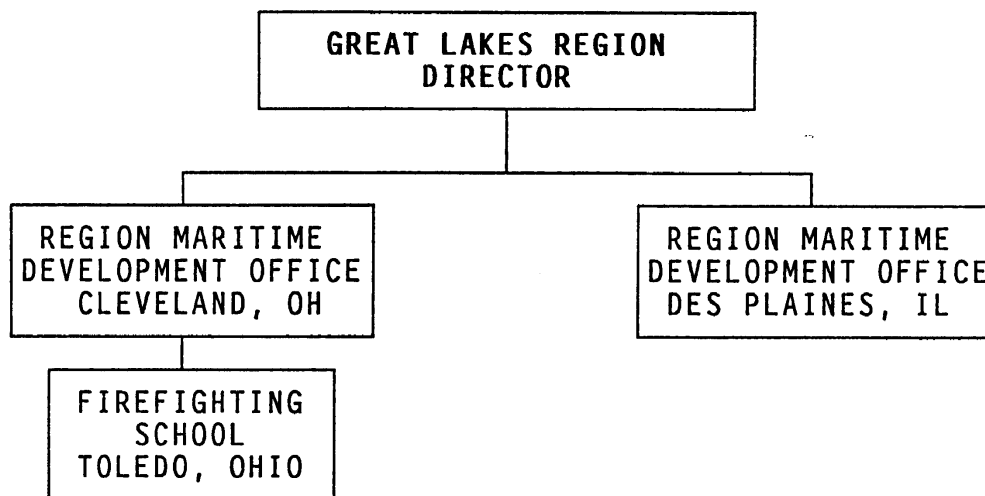
ALPHA H. AMES, JR.  
Director  
Great Lakes Region

Concurrence:



EARNEST HAWKINS  
Associate Administrator  
for Administration

MARITIME ADMINISTRATION  
GREAT LAKES REGION



April 1992