

Appendix J

Appendix J
Ship Photo Log



N-SS-Boatdeck-FT-11A

N55-Boor Deck- FT-1B

1/2" label FT-1B

NSS-Boat Deck-FT-1C

NSS-Boat Deck-MM-2A



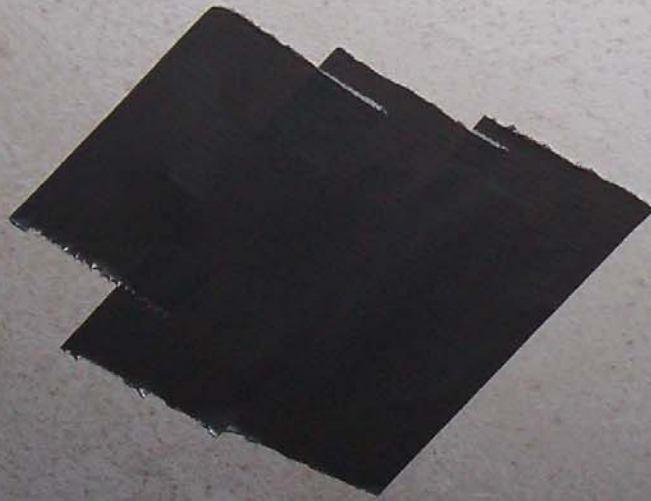
NSS - Boat Deck-MM-2B



NSS-BoatDeck-MM-ZC



NSS-Boat Deck-MM-3A



NSS-BoatDeck-MM-3B



NSS-Boat Deck-MM-3C



NSS-Boatdeck-FT-5A



NSS-Boord K-FT-SB

NSS-Boat Deck-FT-5C

NSS-Boat Deck-MM-6A



NSS-Boat Deck MM-1R →



NSS-Boat Deck-MM-6C ->

NSS-BoatDeck-FT-1B

NSS-BoatDeck-MM-4A

NSS-BoatDeck-MM-4A

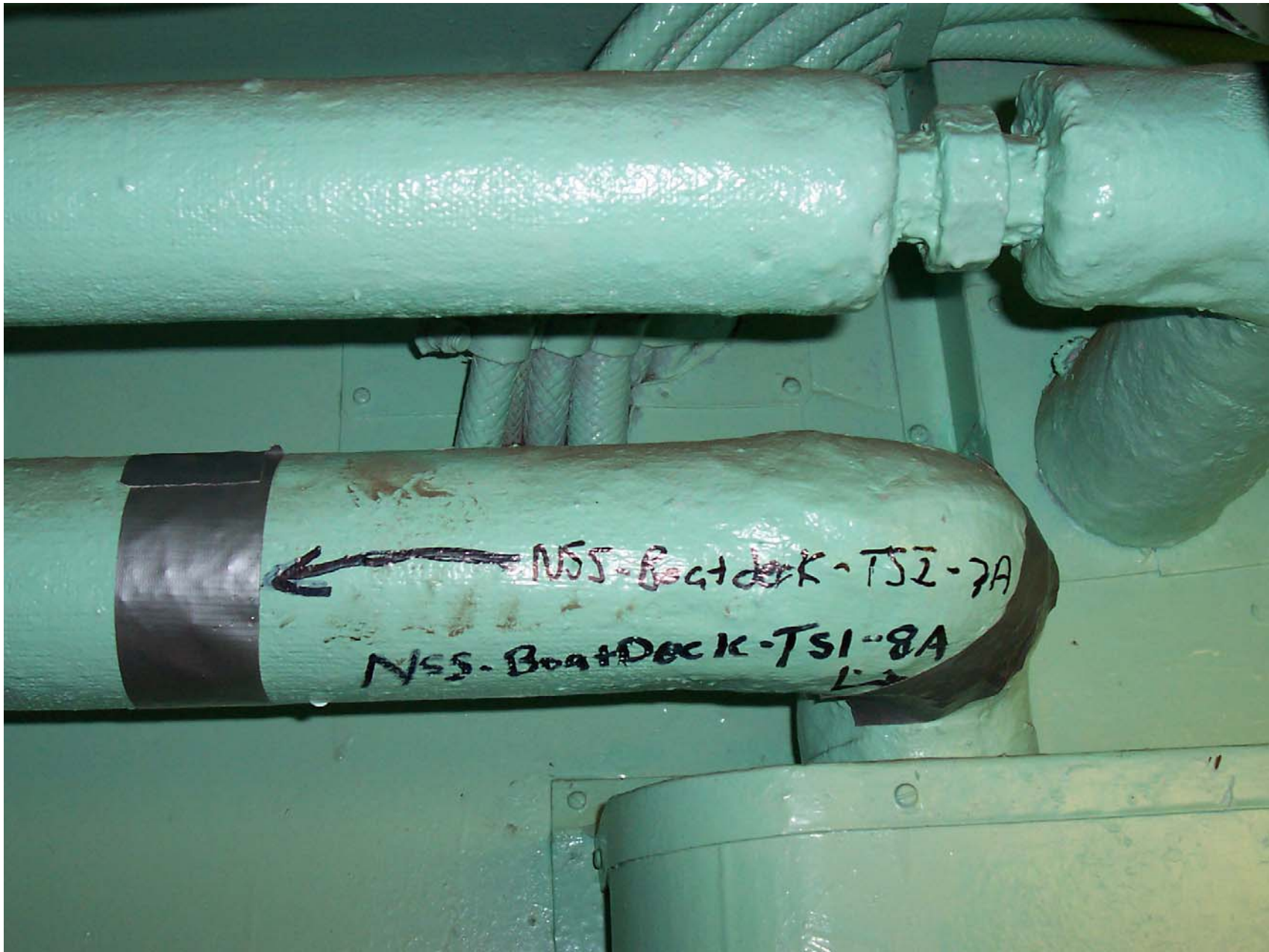


NSS - Boat deck - mm - 4B



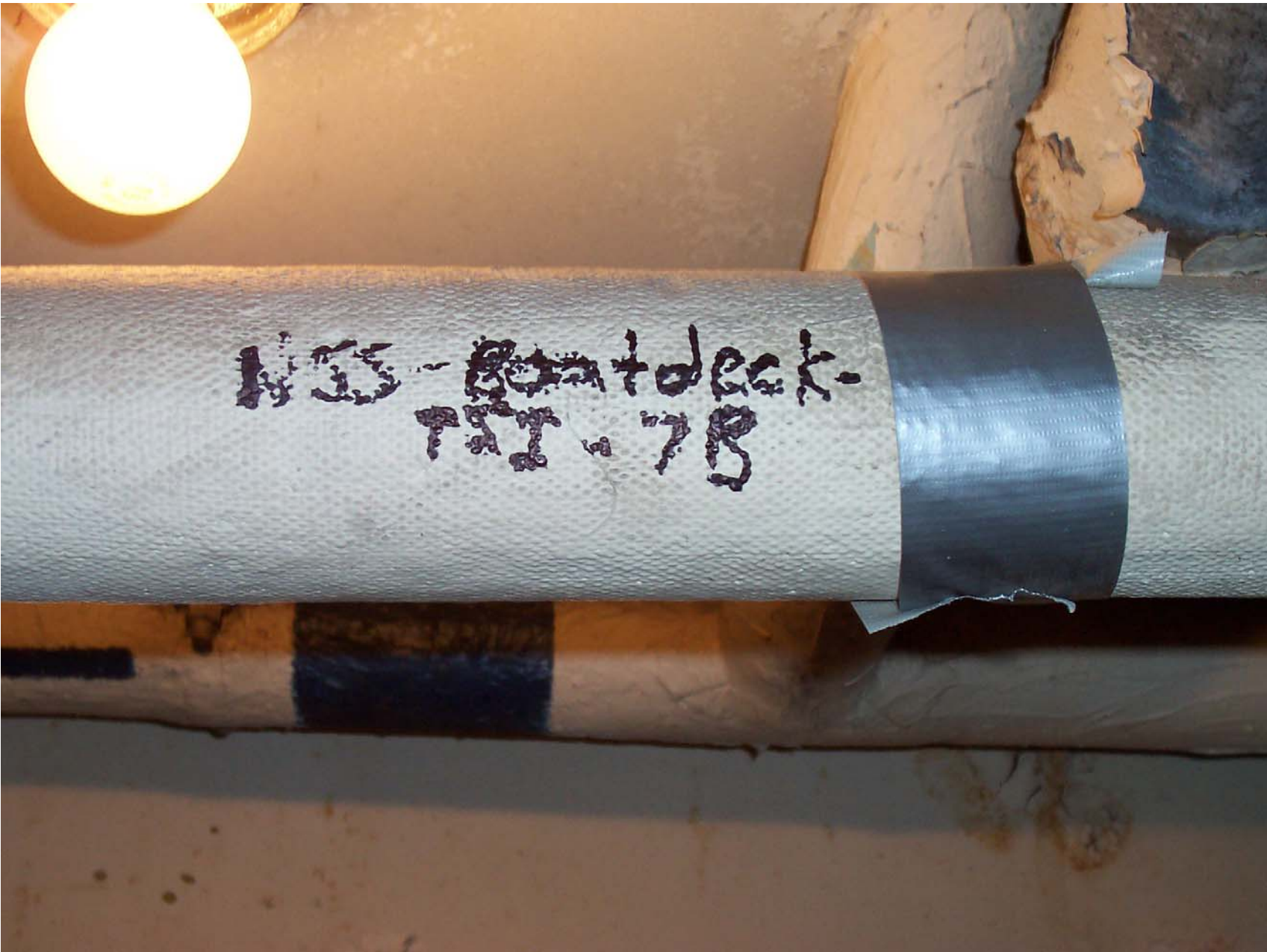
NSS-Boatdeck.
mm-4C



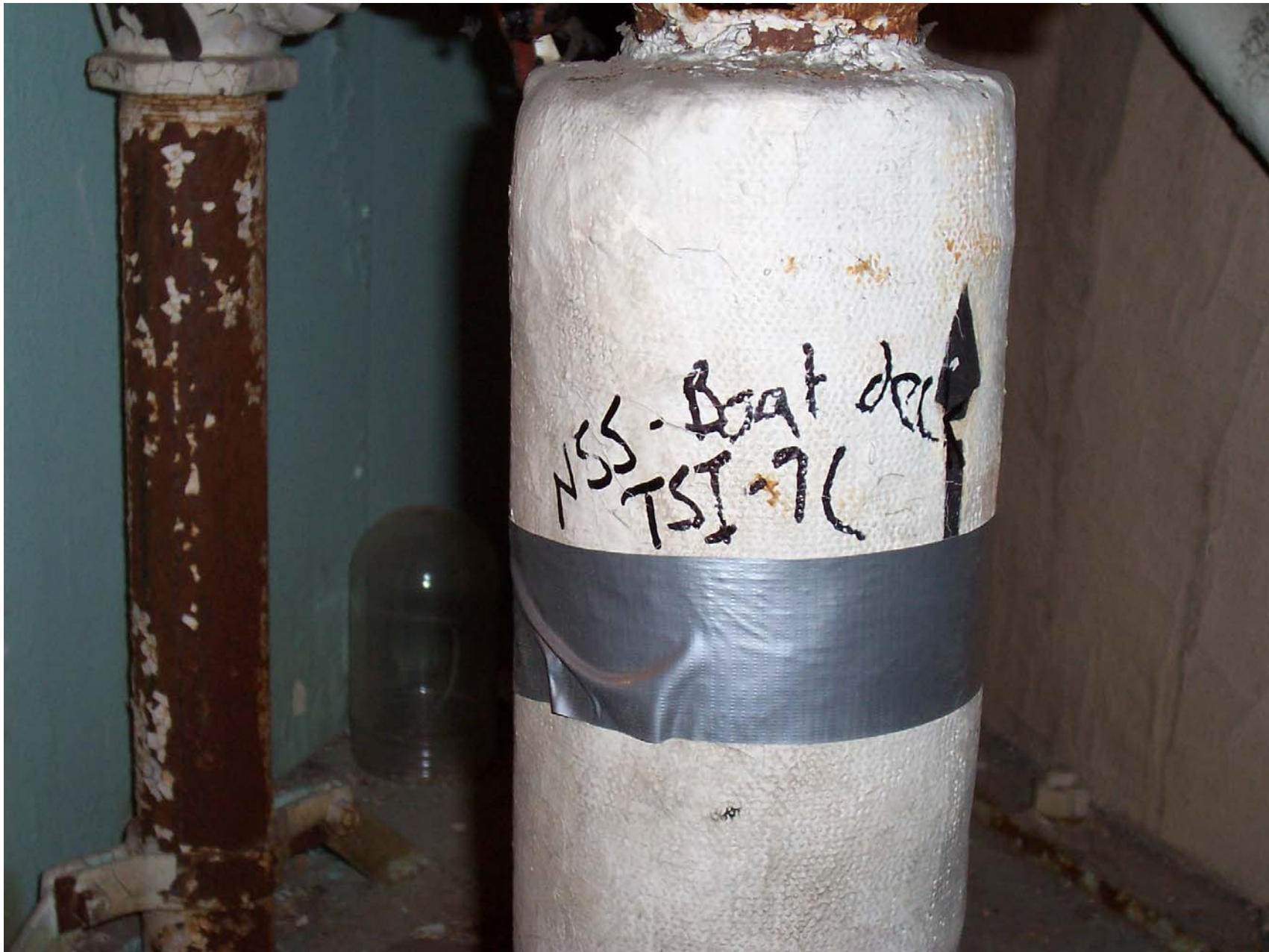


← NSS-BoatDeck-TS2-7A

NSS-BoatDeck-TS1-8A



NO - Boat deck
7/11, 7/20/11





NSS- BoatDeck-TSI-8B





NSS-FromDeck-MM-5A

NSS-FromDeck-MM-5A

NSS-Prom Deck-MM-5B

NSS-Prom Deck-MM-5B

NSS-Prom Deck-MM-5C



NSS-Prom Deck-MM-5C

NSS-PromDeck-MM-6C



NSS-PromDeck-MM-6C

NSS-PromDeck-MM-6B

NSS-Prom Deck-MM-6B



NSS-BoatDeck-MM-3B





NSS-Prom Deck-FT-1A

NSS-PromDeck-FT-1B

NSS-PromDeck-FT-1B



NSS-PromDeck-FT-10

A photograph showing a close-up of a ship's deck railing. The railing consists of a light-colored, possibly painted, metal band with a darker, rusty section in the middle. A white, rectangular label is affixed to the lower part of the railing. The label and the metal band both have the handwritten text "NSS - Prom Deck - FT - 2A" written on them in black ink. The background is a dark, textured surface, likely the ship's hull or another part of the deck.

NSS - Prom Deck - FT - 2A

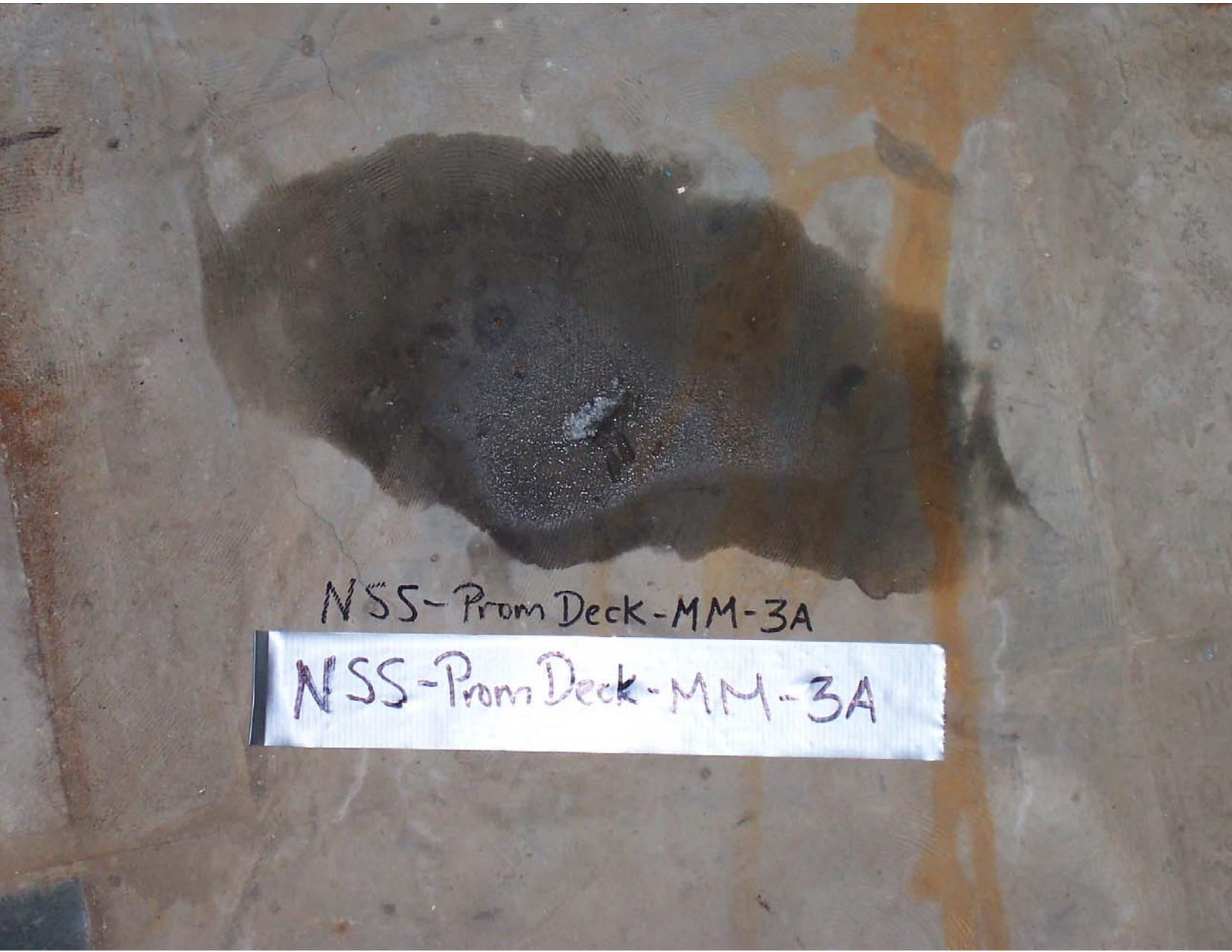
NSS - Prom Deck - FT - 2A

NSS-Prom Deck-FT-2B

NSS-Prom Deck-FT-2C



NSS-Prom Deck-FT-2C



NSS-Prom Deck-MM-3A

NSS-Prom Deck-MM-3A



NSS-PromDeck-MM-3B

NSS-PromDeck-MM-3B



NSS-Prom Deck-MM-3C

Prom Deck-MM-3C

← NSS-Prom

NSS-Prom Deck-MM-7A

← NSS-Prom Deck

NSS-Prom Deck-MM-7B

NSS-PromDeck-MM-7C

A photograph of a metal structure, possibly a ship's deck, featuring two labels with handwritten text. The labels are attached to a perforated metal surface. The top label is on a piece of silver tape, and the bottom label is on a larger piece of perforated metal. In the background, there are mechanical components, including a green valve and a circular metal part.

NSS-Prom Deck-MM-4A

NSS-Prom Deck-MM-4A

NSS-Prom Deck-MM-4B

NSS-Prom Deck-MM-4B

NSS-ADeck-MM-20A

NSS-Deck A-MM-9B

-SSN