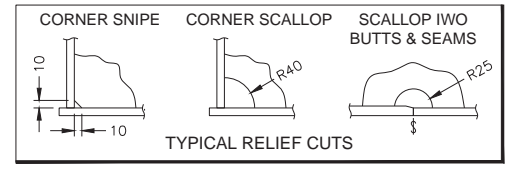


**ABBREVIATIONS**

ABL - ABOVE BASELINE	MIN - MINIMUM
ABT - ABOUT	MLD - MOLDED
B - BRACKET	N&F - NEAR SIDE & FAR SIDE
BHD - BULKHEAD	NS - NEAR SIDE
BKT - BRACKET	NT - NON-TIGHT
BTM - BOTTOM	OA - OVERALL
C - FULL COLLAR	OPNG - OPENING
C/F - CUT FROM...	OT - OIL-TIGHT
CHK - CHOCK	OUTBD - OUTBOARD
CL - CENTERLINE	PLATF - PLATFORM
CLR - CLEAR	PLT - PLATE
CMG - COAMING	P/S - PORT & STARBOARD
CTR - CENTER	REF - REFERENCE
CTRD - CENTERED	RHS - STRUCTURAL TUBE
DBLR - DOUBLER	RECTANGULAR HOLLOW SECTION
DK - DECK	S - SNIPE SHORT
FB - FLAT BAR	SHS - STRUCTURAL TUBE
FCPLT - FACEPLATE	SQUARE HOLLOW SECTION
FLG(D) - FLANGE(D)	SIM - SIMILAR
FR - FRAME	SPCG - SPACING
FS - FAR SIDE	STBD - STARBOARD
FWD - FORWARD	STD - STANDARD
GDR - GIRDER	STFNR - STIFFENER
HDR - HEADER	T&B - TOP & BOTTOM
HP - HOLLAND PROFILE (BULB FLAT)	TRANSV - TRANSVERSE
IB - INNER BOTTOM	TYP - TYPICAL
INBD - INBOARD	VL - VERTICAL LADDER
INTRMDT - INTERMEDIATE	W - WELDED CONNECTION
IWO - IN WAY OF	W/ - WITH
KNU - KNUCKLE	W/O - WITHOUT
L - LUG	WT - WATER-TIGHT
L - STEEL ANGLE	WTB - WATER-TIGHT BHD
LG - LONG	-II- - DITTO (SAME AS...)
LKG - LOOKING	
LONGL - LONGITUDINAL	

**GENERAL NOTES**

- EXCEPT WHERE OTHERWISE NOTED, ALL STEEL IS TO BE MILD STEEL, ABS GRADE A. AH36 STEEL SHOWN IN BRACKETS [ ].
- ALL MATERIAL, WELDING, FABRICATION AND WORKMANSHIP IS TO BE IN ACCORDANCE WITH APPLICABLE ABS RULES.
- DIMENSIONS IN MILLIMETERS EXCEPT WHERE OTHERWISE NOTED.
- PROVIDE RELIEF CUTS AS SHOWN IN THE TABLE BELOW. IF NONE IS SHOWN ON THE DETAIL, IT IS ASSUMED TO HAVE THE 10x10 CORNER SNIPE AND IS TO BE FILLED WITH WELD. SCALLOPS SHALL HAVE RADIUS AS SHOWN IN THE TABLE BELOW UNLESS NOTED OTHERWISE.
- FOR LONGITUDINAL AND TRANSVERSE SCANTLINGS NOT SHOWN ON THIS DRAWING, SEE REFERENCE DRAWINGS 1 AND 4.
- SCANTLINGS AND PANEL STIFFENER ARRANGEMENTS SHOWN ON THIS DRAWING MAY BE MODIFIED ACCORDING TO FURTHER DESIGN DEVELOPMENT.
- OPENINGS SHOWN ARE FOR ACCESS, TRUNKS, PANEL LIGHTENING AND SOME VENTILATION; NO CABLE OR PIPE OPENINGS HAVE BEEN SHOWN. DECK AND BHD OPENING SIZES ARE APPROXIMATE AND MAY BE MODIFIED AS REQ'D TO SUIT FINAL DEVELOPMENT.



**RESERVATIONS**

- STRUCTURE IN WAY OF STERN FRAME AND AFT PEAK PENDING DEVELOPMENT.
- FOREPEAK AND BOW STRUCTURE PENDING DEVELOPMENT.

**REVISIONS**

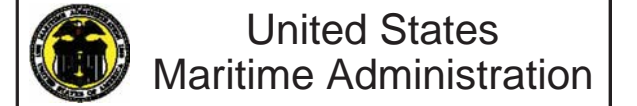
No.	DESCRIPTION	BY/DATE/APPD
-	INITIAL ISSUE	MDS 02/28/17 EVR
0	CORRECTION OF ABS COMMENTS	CPB 07/20/17 EVR

**REFERENCES**

No.	TITLE	DWG or DOC No.
1	MIDSHIP SECTION	2015-017-03-11
2	HULL SCANTLINGS	2015-017-03-42
3	DECKHOUSE SCANTLINGS	2015-017-03-43
4	TYP TRANSVERSE BHD	2015-017-03-44
5	-	-

**HEC** **Herbert Engineering Corp.**  
*Naval Architects* San Francisco Glasgow  
*Marine Engineers* Annapolis Shanghai  
*Ocean Engineers* www.herbert.com

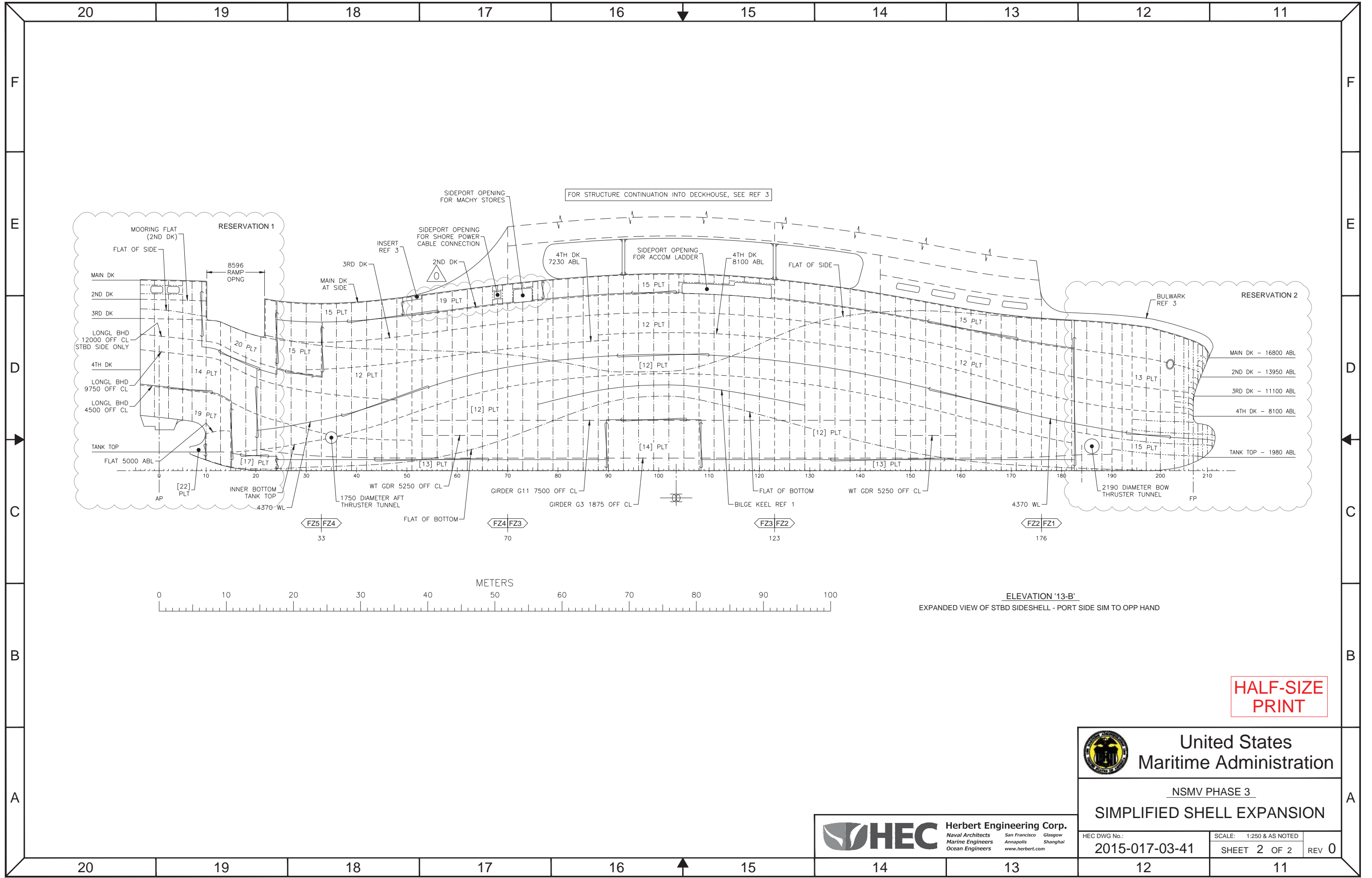
DRWN: MDS	DATE: FEB 15, 2017	SCALE: 1:250 & AS NOTED
CHKD: EVR	APPD: EVR	ACADFILE: 150170341-
PROJECT FILE: 2015-017-03 (NSMV ph3 Structure)	PLOTSCALE: ANSI D 1:1	
ABS APPROVAL: -		



**NSMV PHASE 3**  
**SIMPLIFIED SHELL EXPANSION**


**HALF-SIZE PRINT**

OWNER APPVL: -	HEC DWG No.: 2015-017-03-41
DATE: -	
FILE: -	SHEET 1 OF 2 REV 0



ELEVATION '13-B'  
EXPANDED VIEW OF STBD SIDESHELL - PORT SIDE SIM TO OPP HAND

**HALF-SIZE PRINT**

	<b>United States Maritime Administration</b>	
	NSMV PHASE 3 <b>SIMPLIFIED SHELL EXPANSION</b>	
HEC DWG No.: <b>2015-017-03-41</b>	SCALE: 1:250 & AS NOTED SHEET 2 OF 2	REV 0


**Herbert Engineering Corp.**  
 Naval Architects    San Francisco    Glasgow  
 Marine Engineers    Annapolis    Shanghai  
 Ocean Engineers    www.herbert.com